

BYC 2014 Thompson Trophy Navigation Contest January 26th 2014

Our first BYC race of the year will be on Sunday, 26 January 2014. This 11.5 nautical mile contest designed by CAPT Steve Brett (thanks Steve!) will be the final prep before the February Heavy Weather navigation contest. The race will take place in the afternoon with racing scheduled to finish at 1415. Following the race, we will gather in the clubhouse and, after the normal telling of tales of woe, we will enjoy a **club-hosted dinner around 1700** with beverages BYOB. We will finish the dinner with presentation of the awards.

There is a sign-up sheet in the clubhouse for the race and for counting heads for the dinner preparation. Please take a minute to sign up there or to notify me at jn.burwell@wavecable.com by Wednesday, January 22th of your planned participation.

There will be a skull session Wednesday night (22 January) at 1900 to share race plans, assist with spreadsheet use, and figure the corrections for our infamous currents.

Hope to see you there.

John Burwell
Regatta Chair for Power
360-377-5918
jn.burwell@wavecable.com

BYC 2014 THOMPSON TROPHY NAVIGATION CONTEST

Special Rules

1. This race will be governed by IPBA rules except as noted herein.
2. Rules of the Road always apply.
3. Skippers will provide their own observers. Minimum crew is the skipper and the observer.
4. Multiple contestants are allowed on a single vessel (including sailboats) for this contest.
5. Predicted Logs shall be turned in to the Regatta Chair prior to starting the contest.
6. Time shall be Pacific Standard Time. A stopwatch will be allowed only for timed runs, time outs and verification of reading the official time by the observer. The stopwatch shall be cleared and stopped when its use is no longer permitted.
7. Throttles may be adjusted during the contest to adjust RPM from the RPM shown on the log plus or minus 10%.
8. The IPBA handicap as set forth in the Standard Rule Book shall apply.
9. Navigation Aids: Radar may be on Standby and NOT USED EXCEPT WHEN NEEDED FOR SAFETY PURPOSES ONLY. Auto pilots may be used if not connected to GPS. Auto pilots and other instruments may display magnetic/gyro headings only. Cellular telephones must be turned off. Chart plotters or computers using navigation programs, not connected to or using GPS data or displaying time of day, may be used in place of small scale charts. A large scale printout of the course is still required for the observer to review.
10. VHF Channel 9 will be used for all prerace communication. Monitor VHF 9 before the race and VHF 16 during the race.
11. The recommended chart for this contest is NOAA Chart 18449. The Official Mileage for this contest is **11.5 nautical miles**, which cannot be exceeded.
12. This contest shall be conducted at Cruise Speed except where otherwise directed in the Course Description.
13. All contestants shall lay out courses as direct as practical.
14. All boats shall plan to finish between 1400 and 1415 Pacific Standard Time.
15. Turn in completed Contest Logs to the Regatta Chair prior to 1630 in the clubhouse.

BYC 2014 THOMPSON TROPHY NAVIGATION CONTEST

Course Description

GENERAL: This contest course will be run on the waters of Port Washington Narrows, Ostrich Bay, and Dyes Inlet.

START LINE is when Rudy Point is abeam to starboard within 250 yards. On a **STANDING START**, proceed at Cruise speed to Control Point CP1.

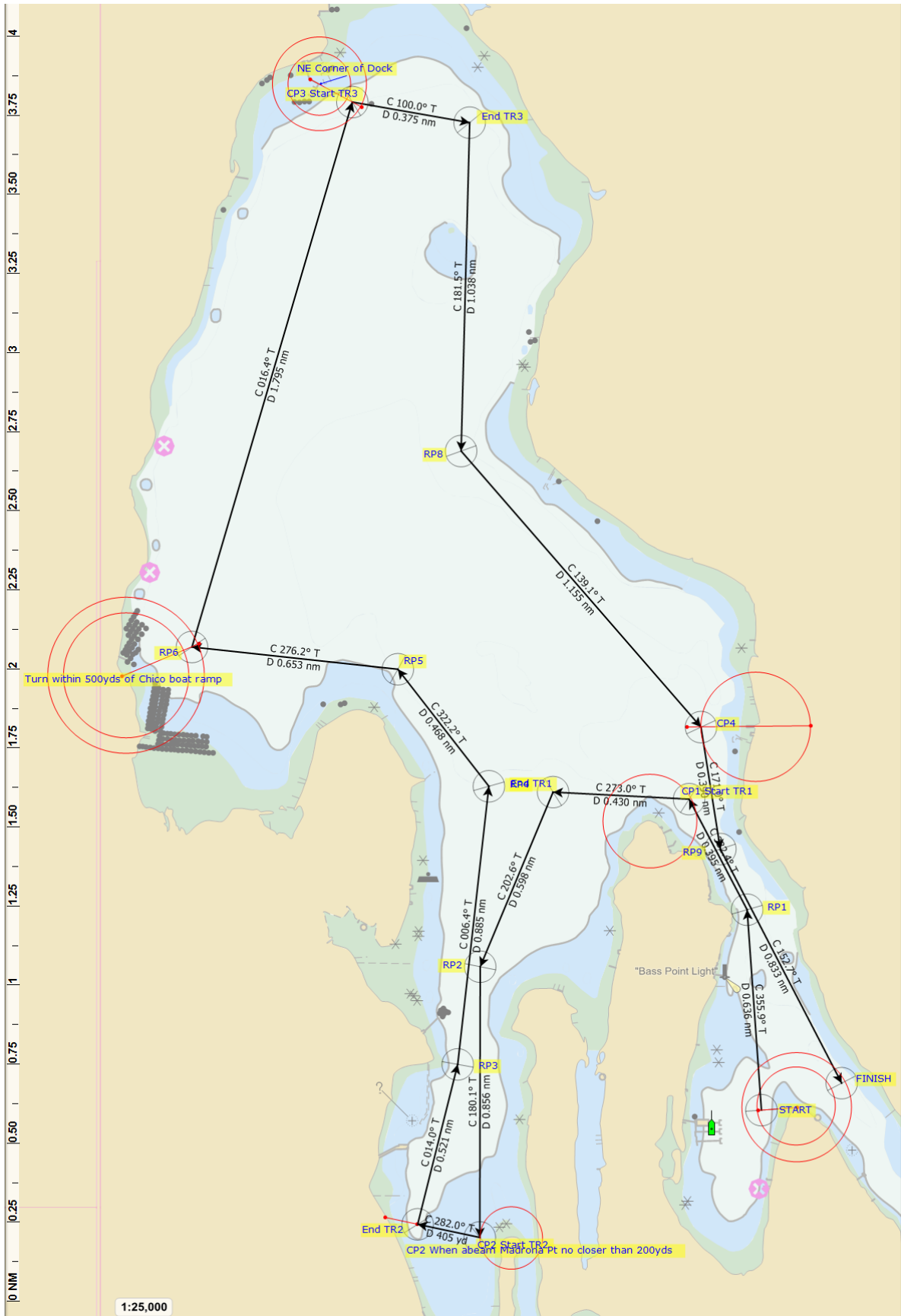
CONTROL POINT CP1 is when Rocky Point is abeam to port at 300 yards. At CP1, start Timed Run TR1 on course 273°T for 0.43 nm. At the end of TR1, proceed to Control Point CP2.

CONTROL POINT CP2 is the when Madrona Point is abeam to port at 200 yards. At CP2, Start Timed Run TR2 on course 282°T for 0.20 nm then proceed to Control Point CP3. Enroute to CP3 pass the Chico Boat Ramp between 400 and 500 yards off.

CONTROL POINT CP3 is an extension of the Silverdale Marina north dock between 200 and 300 yards from the NE corner of the dock. Immediately start Timed Run TR3 on course 100°T for 0.375 nm. At the end of TR4 proceed to Control Point CP4.

CONTROL POINT CP4 is when on an extension of the Tracyton boat ramp (Tracy Ave) within 350 yds. Proceed directly to the finish line.

FINISH is when Rudy Point is abeam to starboard within 350 yards.



WP	Latitude	Longitude	Bearing (°True)	Distance (nm)
START	48°35.30' (18")	123°39.57' (34")		
RP1	48°35.94' (56")	123°39.63' (38")	356	0.636
CP1 Start TR1	48°36.29' (17")	123°39.91' (54")	332	0.395
End TR1	48°36.31' (19")	123°40.54' (33")	273	0.430
RP2	48°35.76' (45")	123°40.88' (53")	203	0.598
CP2 Start TR2	48°34.90' (54")	123°40.88' (53")	180	0.856
End TR2	48°34.94' (57")	123°41.18' (11")	282	0.200
RP3	48°35.45' (27")	123°40.99' (59")	14	0.521
RP4	48°36.33' (20")	123°40.84' (51")	6	0.885
RP5	48°36.70' (42")	123°41.27' (16")	322	0.468
RP6	48°36.77' (46")	123°42.23' (14")	276	0.653
CP3 Start TR3	48°38.49' (29")	123°41.48' (29")	16	1.795
End TR3	48°38.43' (26")	123°40.93' (56")	100	0.375
RP8	48°37.39' (23")	123°40.97' (58")	181	1.038
CP4	48°36.52' (31")	123°39.85' (51")	139	1.155
RP9	48°36.13' (08")	123°39.76' (46")	171	0.390
FINISH	48°35.39' (23")	123°39.19' (12")	153	0.833